



Luxury Silence

# ADVAN dB V553

New



ET



SPEED RANGE

Y/W/V/H

- 21 inch
- 20 inch
- 19 inch
- 18 inch
- 17 inch
- 16 inch
- 15 inch
- 14 inch

- Wet
- Dry
- Silence
- Comfort
- Handling
- Asymmetric

Pattern No. V553

## Newly designed tread pattern produces quietness and reliable wear / wet performance

### Subdivided into 144 blocks

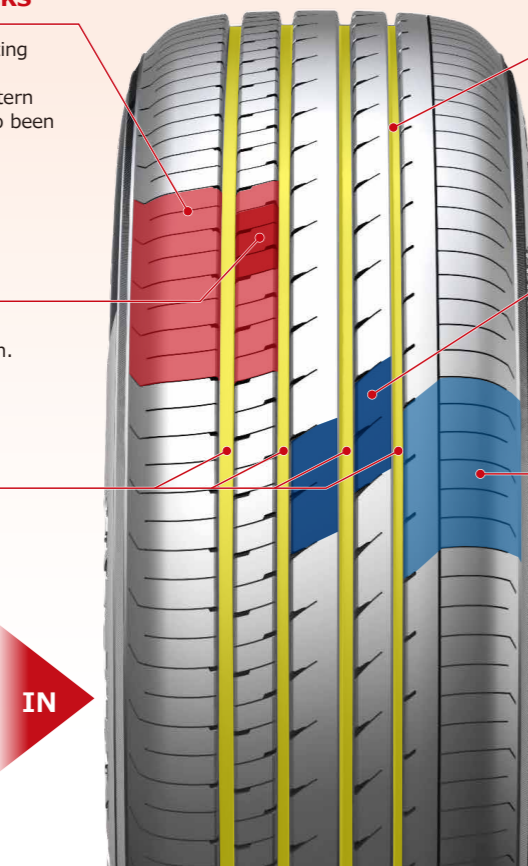
To reduce the sound of each block hitting the road surface, the tire surface is composed of fine blocks to reduce pattern noise. The number of grooves has also been increased to ensure drainage and high performance in wet conditions.

### Staggered placement of grooves and sipes

Staggered placement, optimization of block rigidity, and frequency dispersion.

### Four main grooves for improved drainage

The inside and outside grooves of the tire are designed to fulfill different roles. The inside grooves are for wet performance, and the outside grooves are for dry performance, with the four main grooves arranged such that they become thicker toward the inside. This achieves a high level of balance between drainage and handling stability / maneuverability.



### Narrow straight groove processing

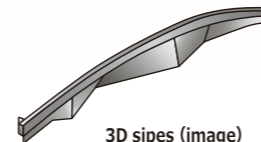
Narrow straight groove arrangement optimizes block rigidity and complements the wet performance of the outside portion by improving maneuverability.

### Performance optimized by chamfering and sipes

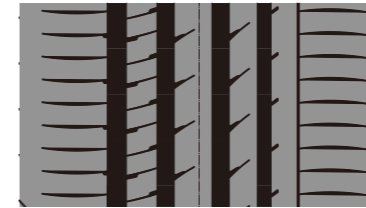
Chamfering and sipes ensure drainage while further optimizing block rigidity and suppressing pattern noise.

### Further improvements to block rigidity

Shoulder lug grooves are formed by 3D sipes for improved block rigidity. This also contributes to handling stability / maneuverability, wear resistance, and suppression of exterior vehicle noise.

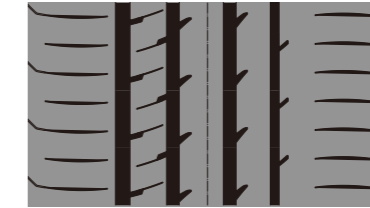


## Designed to retain its original form and minimize performance degradation, with components remaining largely unchanged from when the tire is new, even after wear



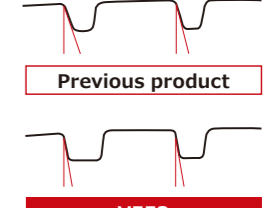
When new

- Designed to increase the volume of the main grooves, ensuring wet performance when new and minimizing the degradation of wet performance during wear.



At 60% wear

- Designed to minimize changes from when the tire was new.
- Narrow straight grooves disappear, limiting the worsening of pattern noise.



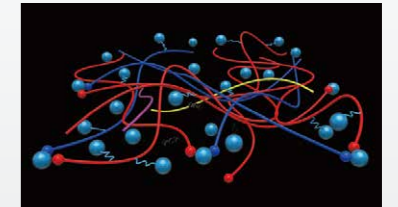
Previous product

V553

- The groove walls are designed to stand erect, reducing the change in groove volume after wear, and reducing the loss of wet performance.

## Delivers opposing wet performance and fuel economy at a high level

- Silica does not mix easily with rubber, but is dispersed evenly by a blend of coupling agents and silica dispersants.
- Small grain particulate silica is used to improve wet performance and wear resistance by increasing adhesive friction.
- A.R.T. mixing is applied to enhance silica dispersion. It also offers a high balance of wear resistance, wet performance, and roll resistance.



ADVAN dB V553		Pattern No. V553				
Inch	Series	Dimensions	Pattern	RF/XL	Overall Diameter (mm)	Approved Rim Width (inch)
21	45	225/45R21 95W			735	7-8.5
20	40	245/40R20 99W		XL	706	8-9.5
19	40	235/40R19 96Y		XL	671	8-9.5
		245/40R19 98W		XL	679	8-9.5
45		225/45R19 96W		XL	685	7-8.5
		245/45R19 102Y		XL	703	7.5-9
50		195/50R19 88H			682	5.5-7
		245/50R19 101W			729	7-8.5
55		225/55R19 103V		XL	732	6-8
18	35	265/35R18 97W		XL	644	9-10.5
		225/40R18 92W		XL	638	7.5-9
		235/40R18 95W		XL	645	8-9.5
45		245/40R18 97Y		XL	653	8-9.5
		215/45R18 93W		XL	651	7-8
50		225/45R18 95W		XL	657	7-8.5
		235/45R18 98W		XL	669	7.5-9
		245/45R18 100W		XL	677	7.5-9
60		225/50R18 99W		XL	683	6-8
		235/50R18 97W			699	6.5-8.5
		245/50R18 100W			703	7-8.5
55		225/55R18 98V			705	6-8
60		225/60R18 104W		XL	727	6-8
17	45	205/45R17 88W		XL	616	6.5-7.5

Inch	Series	Dimensions	Pattern	RF/XL	Overall Diameter (mm)	Approved Rim Width (inch)
17	45	215/45R17 91W		XL	626	7-8
		225/45R17 91W			634	7-8.5
50		245/45R17 99W		XL	652	7.5-9
		205/50R17 93W		XL	638	5.5-7.5
55		215/50R17 95V		XL	648	6-7.5
		225/50R17 94W			658	6-8
60		215/55R17 94W			672	6-7.5
		225/55R17 97W			680	6-8
60		195/60R17 90H			666	5.5-7
		215/60R17 96H			690	6-7.5
65		225/60R17 99H			702	6-8
		225/65R17 106V		XL	724	6-8
16	55	195/55R16 87V			620	5.5-7
		205/55R16 91W			632	5.5-7.5
60		195/60R16 89V			640	5.5-7
		205/60R16 92V			652	5.5-7.5
15	55	215/60R16 95V			666	6-7.5
		165/55R15 75V		×	563	4.5-6
65		185/60R15 84H		×	603	5-6.5
		175/65R15 84H		×	609	5-6
15	55	185/65R15 88H		×	620	5-6.5
		195/65R15 91H			635	5.5-7
14	65	155/65R14 75H		×	559	4.5-5.5

XL = Extra Load × = V553A Available size